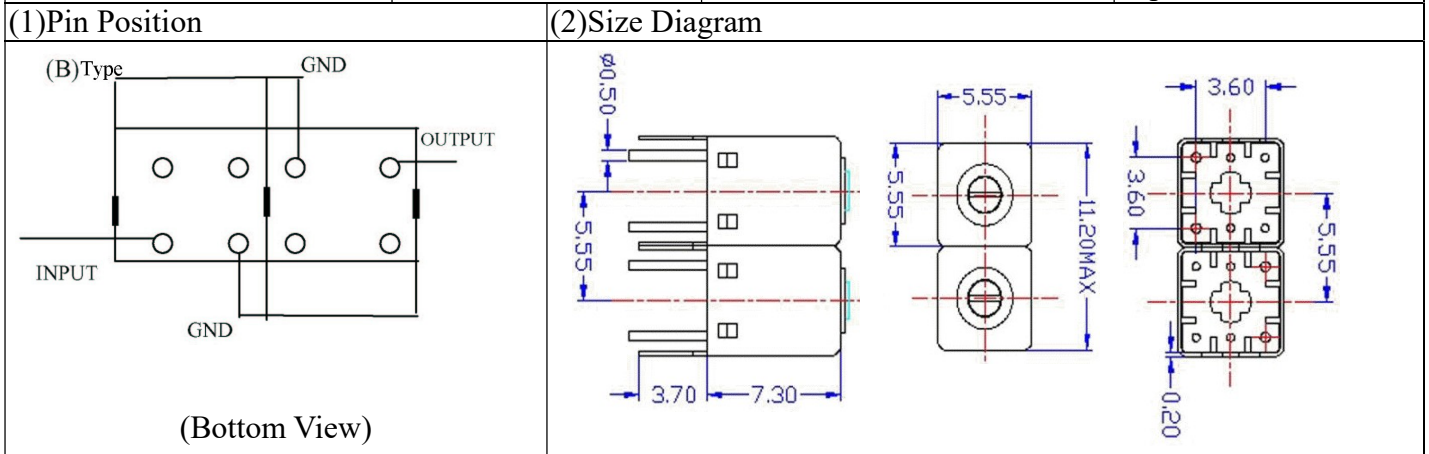


# VHF UHF Helical Filter Specification Sheet

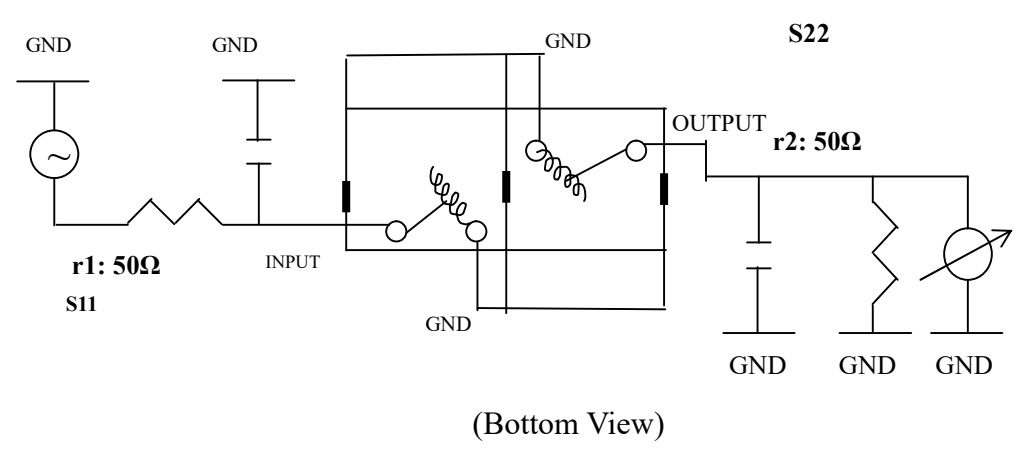
Customer Name		Temwell's Part No.	K2RB-650M-20M
Approval No. /dated		Temwell's print name.	K2RB 650M
Work Instruction No.	201609076C	Date	Sep.30.2016



(3) Electric Charasteric

Item	Specify		
Center Freq.(Fo) +/- 0.5 %		650	MHz
Insertion Loss	Typ.	3.5	dB
-3 dB Bandwidth	Typ.	20	MHz
Sensitivity (Attenuation)	Fo - 100 MHz	Typ.	26 dBc
	F + 100 MHz	Typ.	23 dBc
	Fo - ( )MHz	Typ.	dBc
	Fo +( )MHz	Typ.	dBc
Return Loss	Min.	12	dB
Ripple		< 1	dB
Impedance		In / Out : 50 Ω	
(4) Torque for Tuning Screw		>60 gf · cm	
(5) Temperature Condition:			
Operating Temperature		0°C ~ +60°C	
Storage Temperature		-20°C ~ +70°C	
(6) Input Power		>0.5Watt	

(7) Measuring Circuit: ※Easy to match Impedance 50Ω by parallel with about (---)



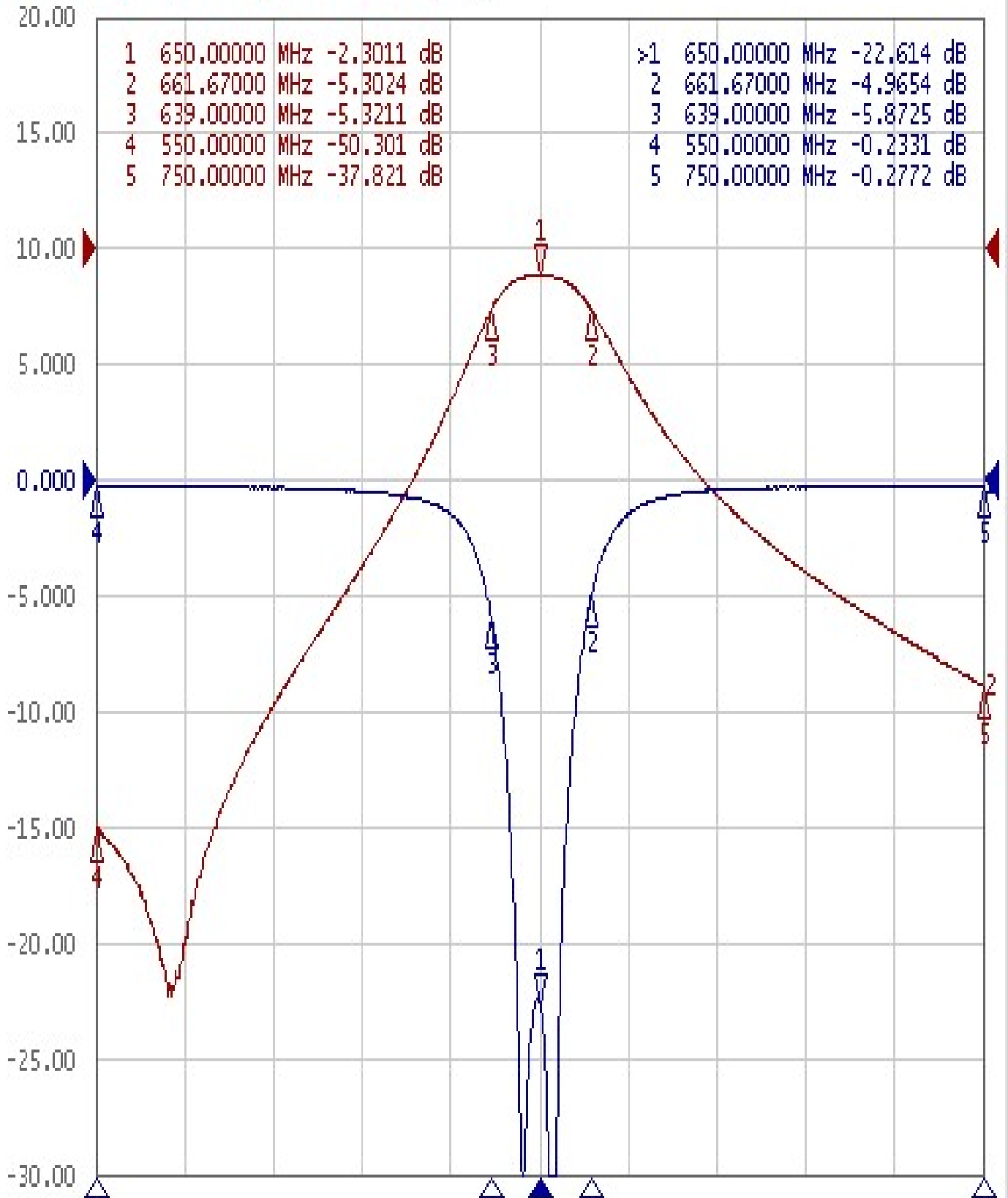
Approval	Supervisor	Designer	Aperture size
C.Y.Chang	C.K.Chang	P.H.Chiang	5R2S(3.8*3.65) (3.69) 5HW024RB3
TEMWELL CORPORATION			

# Performance-K2RB-650M-20M

## 201609076C

Tr1 S11 Log Mag 5.000dB/ Ref 0.000dB [F2]

Tr2 S21 Log Mag 10.00dB/ Ref 0.000dB [F2]



1 Center 650 MHz

IFBW 70 kHz

Span 200 MHz

Cor